

Legend for HVAC equipment and components:

- AHU-1, AHU-2 & AHU-3: TRANE 3TUH1606A0B361A, 15v, 1ph, 15a, WITH 4TXCB026 COIL & CONCENTRIC VENT KIT
- AHU-4: TRANE 4TUH1606A0B361A, 15v, 1ph, 20a, WITH 4TXCB045 COIL & CONCENTRIC VENT KIT
- CU-1, CU-2 & CU-3: TRANE 4TTE4036E3000A, 208/230v, 3ph, MCA 15, MCCP 25
- CU-4: TRANE 4TTE4036E3000A, 208/230v, 3ph, MCA 20, MCCP 30
- CEILING SUPPLY DIFFUSER, H4C RENS, 24"x24" LAY-IN
- CEILING R/A FILTER GRILLE, H4C 654T, 24"x24" LAY-IN
- CEILING SUPPLY DIFFUSER, H4C 20, 6"
- PROGRAMMABLE THERMOSTAT
- DUCT MOUNTED SMOKE DETECTOR
- BATHROOM EXHAUST FAN
- RIGID SUPPLY & RETURN DUCT
- FLEX EXHAUST DUCT WITH LOUVERED/SCREENED DAMPER

ALTERNATE MECHANICAL EQUIPMENT SHALL BE ACCEPTABLE AS LONG AS PERFORMANCE CRITERIA'S ARE ADHERED TO.

2 LEGEND NO SCALE 1/M1

ROOF OR 2nd FLOOR

PROVIDE ANGLE SUPPORTS BETWEEN ROOF TRUSSES AS REQ'D. FOR SUPPORT

3/4" GALV. ALL-THREAD HANGER ROD 8" 10'-0" O.C. (MIN. 2 HANGERS PER SECTION OF DUCT). PROVIDE LOCK NUTS AT DUCT # SECURE TO EXIST. STRUCTURE

STRUCTURE

SPIRAL SUPPLY DUCT

TYPE 'F' DIFFUSER (TYP.)

DOUBLE DEFLECTION DIFFUSER MOUNTING DETAIL

NOTES:

- DUCTWORK SHALL BE INSTALLED PLUMB & LEVEL
- ALL EXPOSED SPIRAL DUCT WORK SHALL BE A DOUBLE WALL LINDAB SPIROGATE SELF-SEALING DUCT SYSTEM (OR APPROVED EQUAL)
- REGISTERED SPIRAL DUCT SHALL BE MOUNTED WITHOUT THE USE OF RECTANGULAR REGISTER TAPS
- TOP & BOTTOM FLANGES SHALL MEET FLUSH WITH THE SPIRAL DUCT WALL REGARDLESS OF DUCT DIAMETER
- EXPOSED DUCT WORK SHALL BE PROVIDED WITH A PAINT-GRIP FINISH

5 HVAC DETAIL NO SCALE 1/M1

SUPPLY DUCT

ROUND RUNOUT

SPIN TAP WITH MANUAL VOLUME DAMPER (MECHANICAL CONTRACTOR SHALL PROVIDE ACCESS DOOR FOR ANY VOLUME DAMPER LOCATED ABOVE A HARD CEILING)

FLEX. DUCT (5' MAX. LENGTH)

TRANSITION DUCT (IF REQ'D.)

ROUND DUCT

SUPPLY DIFFUSER

SPIN TAP TO ROUND NECK DIFFUSER

8 HVAC DETAIL NO SCALE 1/M1

DUCT

SPIN-IN COLLAR WITH MANUAL VOLUME DAMPER & LOCKING DEVICE

SEAL INSULATION TO DUCT WITH CAULKING

EXTEND TAP AS REQ'D. TO ALLOW MAX. 5' LENGTH OF FLEX DUCT BETWEEN CONNECTION & DIFFUSER

SEAL WITH DRAW BAND AT TAP CONNECTION & DIFFUSER/FIXTURE

FLEX DUCT WITH EXTERNAL BLANKET INSULATION (TYP.)

CEILING DIFFUSER

CONNECTIONS TO MAIN DUCT

NOTES:

- TYPICAL CONNECTIONS BETWEEN DUCT & CEILING OR SLOT DIFFUSERS & SINGLE OR DOUBLE SIDED SADDLE BOOT LIGHT FIXTURES AS SHOWN ON THE PLANS OR INDICATED IN THE SCHEDULE
- ONLY (1) 90° TURN ALLOWED IN FLEX DUCT WITH TURN R/D > 1.0. DUCT MUST BE PROPERLY SUPPORTED TO PREVENT KINKING
- IF ADDITIONAL 90° TURNS ARE REQUIRED TO CONNECT OUTLET TO DIFFUSER, EXTEND TAP & PROVIDE EXTERNALLY INSULATED STOVE PIPE ELBS AS REQUIRED

11 HVAC DETAIL NO SCALE 1/M1

TYPE 'B' GAS FLUE UP TO BELMONT CAP ABOVE ROOF. SIZE FLUE PER MFR. DATA.

SUPPORT FROM STRUCTURE W/SPRING TYPE VIBRATION ISOLATORS AND THREADED ROD

FURNACE/ AIR HANDLER

FLEX

RETURN DUCT

MANUAL DAMPER

3/4" Ø TO OBVIOUS EXTERIOR DISCHARGE POINT

1" Ø TO DRAIN BY PLUMBER

MOUNT UNIT IN 18 GA. GALV. STEEL SECONDARY DRAIN PAN. PROVIDE 1" THICK RUBBER VIBRATION ISOLATORS.

OA UP TO INTAKE ON ROOF OR BLDG. SIDENALL

3 HVAC DETAIL NO SCALE 1/M1

AIR FLOW

MANUAL VOLUME DAMPER

BRANCH TAKE-OFF #1 ELEVATION VIEW

AIR FLOW

MANUAL VOLUME DAMPER

DOWN TO DIFFUSER

SINGLE DROP PLAN VIEW

AIR FLOW

SPLITTER DAMPER WITH ROD AND LOCKING QUADRANT

BRANCH TAKE-OFF #2 ELEVATION VIEW

DOUBLE THICKNESS TURNING VANES

NOTES:

USE BRANCH TAKE-OFF #1 WHEN MAIN AND BRANCH DUCTS ARE DIFFERENT DEPTHS

USE BRANCH TAKE-OFF #2 WHEN MAIN AND BRANCH DUCTS ARE SAME DEPTHS

6 HVAC DETAIL NO SCALE 1/M1

RECTANGULAR SUPPLY AIR DUCT

DUCT WRAP

AIR FLOW

DUCT SEALANT

MANUAL BUTTERFLY VOLUME DAMPER

ROUND DUCT

SPIN-IN DUCT FITTING WITH DAMPER & INSUL. GUARD

ALUMINUM DRAW BAND

9 HVAC DETAIL NO SCALE 1/M1

DUCT

SPIN-IN COLLAR WITH MANUAL VOLUME DAMPER & LOCKING DEVICE

SEAL INSULATION TO DUCT WITH CAULKING

EXTEND TAP AS REQ'D. TO ALLOW MAX. 5' LENGTH OF FLEX DUCT BETWEEN CONNECTION & DIFFUSER

SEAL WITH DRAW BAND AT TAP CONNECTION & DIFFUSER/FIXTURE

FLEX DUCT WITH EXTERNAL BLANKET INSULATION (TYP.)

CEILING DIFFUSER

CONNECTIONS TO MAIN DUCT

NOTES:

- TYPICAL CONNECTIONS BETWEEN DUCT & CEILING OR SLOT DIFFUSERS & SINGLE OR DOUBLE SIDED SADDLE BOOT LIGHT FIXTURES AS SHOWN ON THE PLANS OR INDICATED IN THE SCHEDULE
- ONLY (1) 90° TURN ALLOWED IN FLEX DUCT WITH TURN R/D > 1.0. DUCT MUST BE PROPERLY SUPPORTED TO PREVENT KINKING
- IF ADDITIONAL 90° TURNS ARE REQUIRED TO CONNECT OUTLET TO DIFFUSER, EXTEND TAP & PROVIDE EXTERNALLY INSULATED STOVE PIPE ELBS AS REQUIRED

11 HVAC DETAIL NO SCALE 1/M1

STRUCTURE

45° ± 15°

ANCHORAGE

VIBRATION ISOLATOR

VERTICAL LIMIT STOP

HANGER ROD

SEISMIC CABLE - INSTALL HAND TIGHT WITH SLACK

EQUIPMENT SUPPORT FRAME / BRACKET

4 HVAC DETAIL NO SCALE 1/M1

SEE NOTE

FLEXIBLE DUCT CONNECTION TO METAL DUCT

SEE NOTE

COMPLETELY INSULATE THE BACK FACE OF ALL SUPPLY AIR DIFFUSERS

DIFFUSER

FLEXIBLE DUCT CONNECTION TO SUPPLY DIFFUSER

7 HVAC DETAIL NO SCALE 1/M1

DUCT SIZE AS SHOWN ON THE PLANS

DUCT WRAP - SEE SPECIFICATIONS

3" STRAIGHTENER REQ'D. ON LEADING EDGE OF EACH VANE (TYP.)

3" RADIUS MAX.

AIR FLOW

NOTE: TURNING VANES ARE REQ'D. ON EACH SUPPLY & RETURN DUCT EXCEEDING A 30 DEGREE BEND.

10 HVAC DETAIL NO SCALE 1/M1

DUCT

SPIN-IN COLLAR WITH MANUAL VOLUME DAMPER & LOCKING DEVICE

SEAL INSULATION TO DUCT WITH CAULKING

EXTEND TAP AS REQ'D. TO ALLOW MAX. 5' LENGTH OF FLEX DUCT BETWEEN CONNECTION & DIFFUSER

SEAL WITH DRAW BAND AT TAP CONNECTION & DIFFUSER/FIXTURE

FLEX DUCT WITH EXTERNAL BLANKET INSULATION (TYP.)

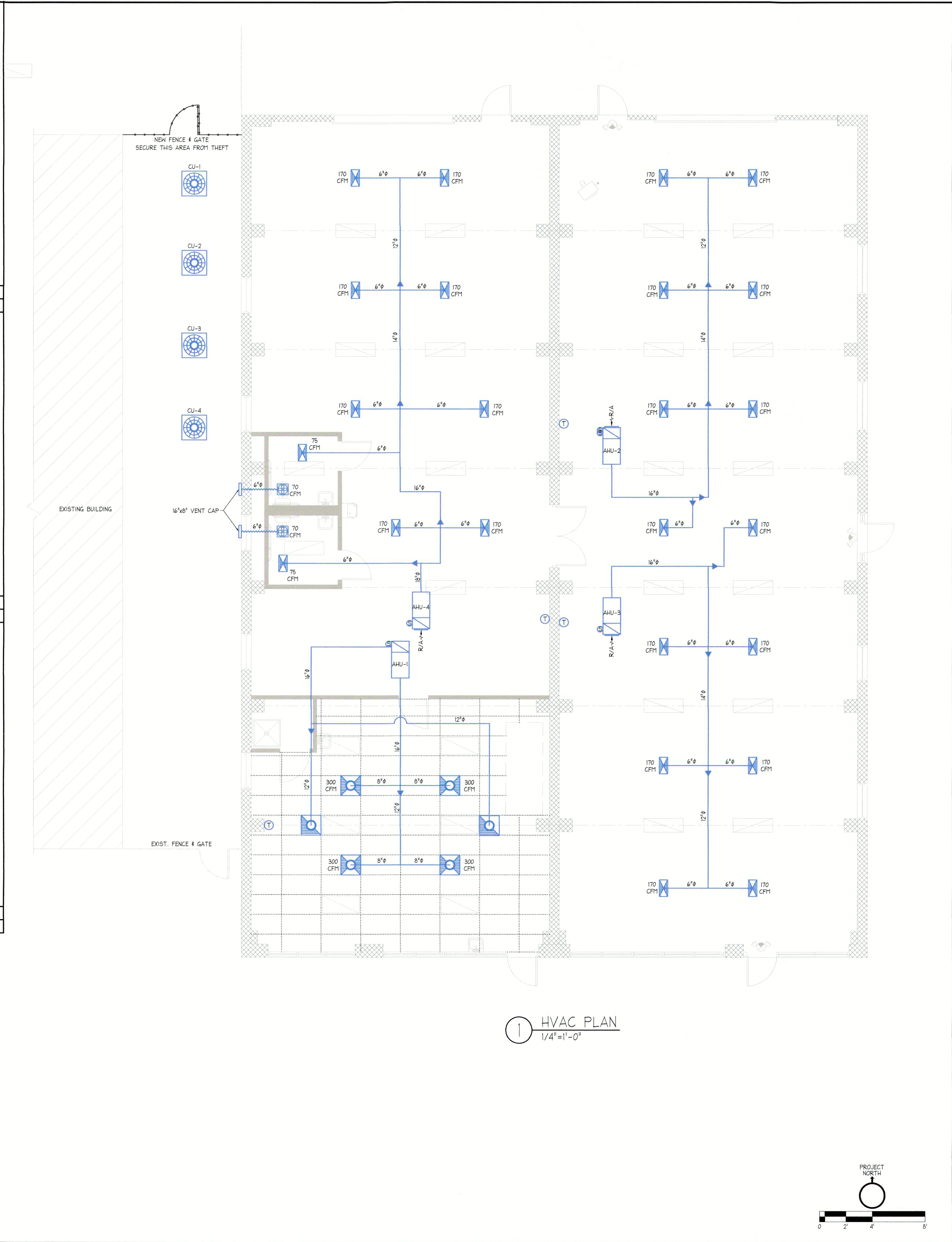
CEILING DIFFUSER

CONNECTIONS TO MAIN DUCT

NOTES:

- TYPICAL CONNECTIONS BETWEEN DUCT & CEILING OR SLOT DIFFUSERS & SINGLE OR DOUBLE SIDED SADDLE BOOT LIGHT FIXTURES AS SHOWN ON THE PLANS OR INDICATED IN THE SCHEDULE
- ONLY (1) 90° TURN ALLOWED IN FLEX DUCT WITH TURN R/D > 1.0. DUCT MUST BE PROPERLY SUPPORTED TO PREVENT KINKING
- IF ADDITIONAL 90° TURNS ARE REQUIRED TO CONNECT OUTLET TO DIFFUSER, EXTEND TAP & PROVIDE EXTERNALLY INSULATED STOVE PIPE ELBS AS REQUIRED

11 HVAC DETAIL NO SCALE 1/M1



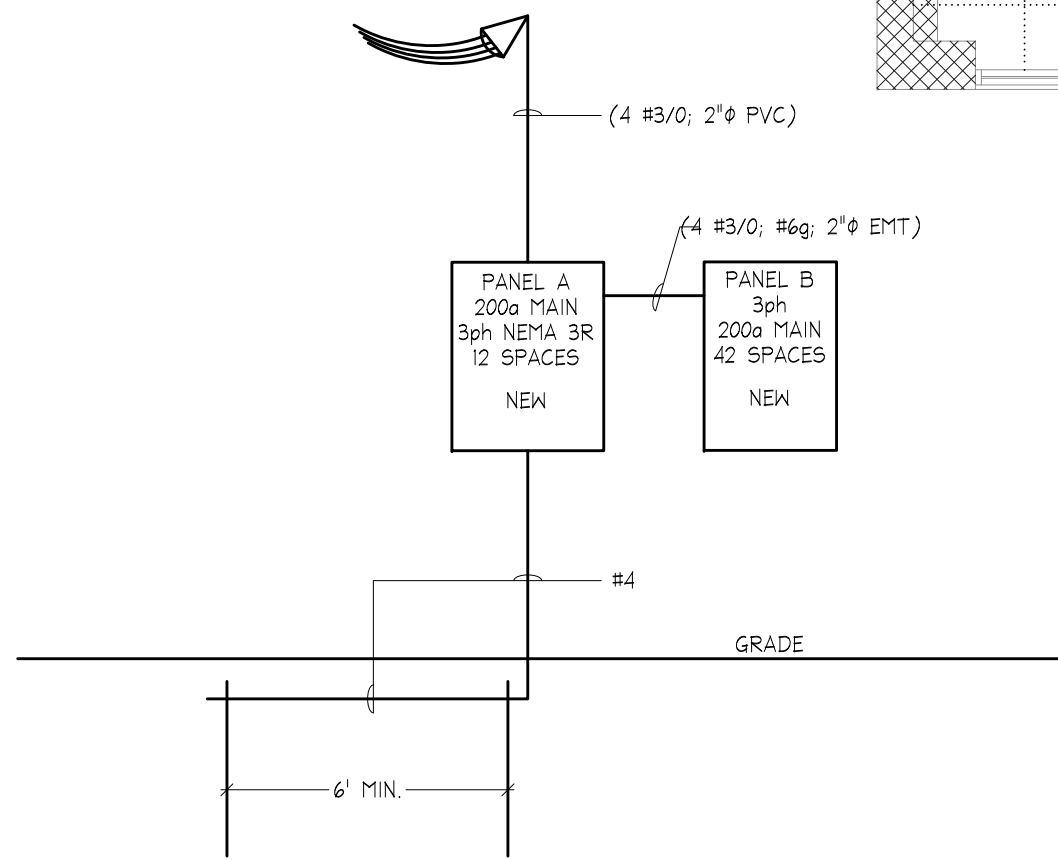
*Ratings see Note #8.									
Chester Farmer's Market									
Panel A									
208/120V 3-Ph 4-W									
200A Main									
10KA Breakers Min.									
AFC = 3614 Amps, w/ 75KVA XMR									
Fed From Service									
Service	Wire Size	Load KVA	Bkr Size			Bkr Size	Load KVA	Wire Size	Service
120v Receptacle	#12	0.2	1P-20	1	x	2	3P-200	17.9	200A Panel B
120v Receptacle	#12	0.2	1P-20	3	y	4	"	18.8	"
1-Phase Receptacle	#10	0.1	2P-30	5	z	6	"	15.1	"
"	"	0.1	"	7	x	8	"	"	"
"	"	"	"	9	y	10	"	"	"
"	"	"	"	11	z	12	"	"	"
Panel Load/Phase	X	18.1	KVA			151	Amps		
Connected As Shown	Y	19.0	KVA			158	Amps		
	Z	15.2	KVA			127	Amps		
Total		52	KVA						
Revisions	Rev 0	7/24/17							

Service Load Summary Chester Farmer's Market	
Service: 208/120v, 3-Ph, 4 W	
200 Amps	
Connected Loads	Connected VA
Internal Lights	2501
External Lights	0
Water Heating	11000
HVAC, RTUs	25698
AHU's	5194
Other (Motors)	601
Food Service Equip.	5881
Receptacles	4328
Other Loads	0
Future Loads	0
Total Connected KVA:	55
Total Connected Amps:	153

2x4, T-8, 3 LAMP, 96w, 120v SURFACE MOUNT
120v RECEPTACLES, ALL ARE EXISTING U.N.O.

*Ratings see Note #8.									
Chester Farmer's Market									
Panel B									
208/120V 3-Ph 4-W									
200A Main									
10KA Breakers Min.									
AFC = 3207 Amps									
Fed From Panel A									
Service	Wire Size	Load KVA	Bkr Size			Bkr Size	Load KVA	Wire Size	Service
Lights/Fans Main Room	#12	0.8	1P-20	1	x	2	3P-25	1.8	CU-1, 3-Ton
Lights/Fans Main Room	#12	0.8	1P-20	3	y	4	"	1.8	"
Recept. Main Room	#12	0.7	1P-20	5	z	6	"	1.8	"
Recept. Main Room	#12	0.7	1P-20	7	x	8	3P-25	1.8	#10 CU-2, 3-Ton
Lights Back	#12	0.6	1P-20	9	y	10	"	1.8	"
Wall Heater Rest Rm.	#12	1.2	1P-20	11	z	12	"	1.8	"
Wall Heater Rest Rm.	#12	1.2	1P-20	13	x	14	3P-25	1.8	#10 CU-3, 3-Ton
Sink W.Htr	#12	1.8	2P-20	15	y	16	"	1.8	"
"	"	1.8	"	17	z	18	"	1.8	"
Sink W.Htr	#12	1.8	2P-20	19	x	20	3P-30	2.4	#10 CU-4, 4-Ton
"	"	1.8	"	21	y	22	"	2.4	"
Rest Rm Lights/Fans	#12	0.4	1P-20	23	z	24	"	2.4	"
Kitchen Lights	#12	0.6	1P-20	25	x	26	2P-40	2.6	#8 Ice Machine
Kitchen G.P. Recept	#12	1.1	1P-20	27	y	28	"	2.6	"
Kitchen G.P. Recept	#12	1.1	1P-20	29	z	30	1P-15	0.4	#12 AHU-1
Water Heater	#10	2.0	2P-30	31	x	32	1P-15	0.4	#12 AHU-2
"	"	2.0	"	33	y	34	1P-15	0.4	#12 AHU-3
Recept. Back	#12	1.3	1P-20	35	z	36	1P-20	0.6	#12 AHU-4
"	"	"	"	37	x	38	"	"	"
"	"	"	"	39	y	40	"	"	"
"	"	"	"	41	z	42	"	"	"
Panel Load/Phase	X	17.9	KVA			149	Amps		
Connected As Shown	Y	18.8	KVA			157	Amps		
	Z	15.1	KVA			126	Amps		
Total		52	KVA						
Revisions	Rev 0	7/24/17							

Electrical Equipment Nameplate Schedule										Rev 0	7/24/17																																																																																																																																																																																																																																																																																																																																																																																																																																																																																																																																																																																																																																																																																																																																																																																																																																																																																																																																																																																																																																																																																																																																																																																																																																																																																																																																																																																																											
---	--	--	--	--	--	--	--	--	--	-------	---------	--	--	--	--	--	--	--	--	--	--	--	--	--	--	--	--	--	--	--	--	--	--	--	--	--	--	--	--	--	--	--	--	--	--	--	--	--	--	--	--	--	--	--	--	--	--	--	--	--	--	--	--	--	--	--	--	--	--	--	--	--	--	--	--	--	--	--	--	--	--	--	--	--	--	--	--	--	--	--	--	--	--	--	--	--	--	--	--	--	--	--	--	--	--	--	--	--	--	--	--	--	--	--	--	--	--	--	--	--	--	--	--	--	--	--	--	--	--	--	--	--	--	--	--	--	--	--	--	--	--	--	--	--	--	--	--	--	--	--	--	--	--	--	--	--	--	--	--	--	--	--	--	--	--	--	--	--	--	--	--	--	--	--	--	--	--	--	--	--	--	--	--	--	--	--	--	--	--	--	--	--	--	--	--	--	--	--	--	--	--	--	--	--	--	--	--	--	--	--	--	--	--	--	--	--	--	--	--	--	--	--	--	--	--	--	--	--	--	--	--	--	--	--	--	--	--	--	--	--	--	--	--	--	--	--	--	--	--	--	--	--	--	--	--	--	--	--	--	--	--	--	--	--	--	--	--	--	--	--	--	--	--	--	--	--	--	--	--	--	--	--	--	--	--	--	--	--	--	--	--	--	--	--	--	--	--	--	--	--	--	--	--	--	--	--	--	--	--	--	--	--	--	--	--	--	--	--	--	--	--	--	--	--	--	--	--	--	--	--	--	--	--	--	--	--	--	--	--	--	--	--	--	--	--	--	--	--	--	--	--	--	--	--	--	--	--	--	--	--	--	--	--	--	--	--	--	--	--	--	--	--	--	--	--	--	--	--	--	--	--	--	--	--	--	--	--	--	--	--	--	--	--	--	--	--	--	--	--	--	--	--	--	--	--	--	--	--	--	--	--	--	--	--	--	--	--	--	--	--	--	--	--	--	--	--	--	--	--	--	--	--	--	--	--	--	--	--	--	--	--	--	--	--	--	--	--	--	--	--	--	--	--	--	--	--	--	--	--	--	--	--	--	--	--	--	--	--	--	--	--	--	--	--	--	--	--	--	--	--	--	--	--	--	--	--	--	--	--	--	--	--	--	--	--	--	--	--	--	--	--	--	--	--	--	--	--	--	--	--	--	--	--	--	--	--	--	--	--	--	--	--	--	--	--	--	--	--	--	--	--	--	--	--	--	--	--	--	--	--	--	--	--	--	--	--	--	--	--	--	--	--	--	--	--	--	--	--	--	--	--	--	--	--	--	--	--	--	--	--	--	--	--	--	--	--	--	--	--	--	--	--	--	--	--	--	--	--	--	--	--	--	--	--	--	--	--	--	--	--	--	--	--	--	--	--	--	--	--	--	--	--	--	--	--	--	--	--	--	--	--	--	--	--	--	--	--	--	--	--	--	--	--	--	--	--	--	--	--	--	--	--	--	--	--	--	--	--	--	--	--	--	--	--	--	--	--	--	--	--	--	--	--	--	--	--	--	--	--	--	--	--	--	--	--	--	--	--	--	--	--	--	--	--	--	--	--	--	--	--	--	--	--	--	--	--	--	--	--	--	--	--	--	--	--	--	--	--	--	--	--	--	--	--	--	--	--	--	--	--	--	--	--	--	--	--	--	--	--	--	--	--	--	--	--	--	--	--	--	--	--	--	--	--	--	--	--	--	--	--	--	--	--	--	--	--	--	--	--	--	--	--	--	--	--	--	--	--	--	--	--	--	--	--	--	--	--	--	--	--	--	--	--	--	--	--	--	--	--	--	--	--	--	--	--	--	--	--	--	--	--	--	--	--	--	--	--	--	--	--	--	--	--	--	--	--	--	--	--	--	--	--	--	--	--	--	--	--	--	--	--	--	--	--	--	--	--	--	--	--	--	--	--	--	--	--	--	--	--	--	--	--	--	--	--	--	--	--	--	--	--	--	--	--	--	--	--	--	--	--	--	--	--	--	--	--	--	--	--	--	--	--	--	--	--	--	--	--	--	--	--	--	--	--	--	--	--	--	--	--	--	--	--	--	--	--	--	--	--	--	--	--	--	--	--	--	--	--	--	--	--	--	--	--	--	--	--	--	--	--	--	--	--	--	--	--	--	--	--	--	--	--	--	--	--	--	--	--	--	--	--	--	--	--	--	--	--	--	--	--	--	--	--	--	--	--	--	--	--	--	--	--	--	--	--	--	--	--	--	--	--	--	--	--	--	--	--	--	--	--	--	--	--	--	--	--	--	--	--	--	--	--	--	--	--	--	--	--	--	--	--	--	--	--	--	--	--	--	--	--	--	--	--	--	--	--	--	--	--	--	--	--	--	--	--	--	--	--	--	--	--	--	--	--	--	--	--	--	--	--	--	--	--	--	--	--	--	--	--	--	--	--	--	--	--	--	--	--	--	--	--	--	--	--	--	--	--	--	--	--	--	--	--	--	--	--	--	--	--	--	--	--	--	--	--	--	--	--	--	--	--	--	--	--	--	--	--	--	--	--	--	--	--	--	--	--	--	--	--	--	--	--	--	--	--	--	--	--	--	--	--	--	--	--	--	--	--	--	--	--	--	--	--	--	--	--	--	--	--	--	--	--	--	--	--	--	--	--	--	--	--	--	--	--	--	--	--	--	--	--	--	--	--	--	--	--	--	--	--	--	--	--	--	--	--	--	--	--	--	--	--	--	--	--	--	--	--	--	--	--	--	--	--	--	--	--	--	--	--	--	--	--	--	--	--	--	--	--	--	--	--	--	--	--	--	--	--	--	--	--	--	--	--	--	--	--	--	--	--	--	--	--	--	--	--	--	--	--	--	--	--	--	--	--	--	--	--	--	--	--	--	--	--	--	--	--	--	--	--	--	--	--	--	--	--	--	--	--	--	--	--	--	--	--	--	--	--	--	--	--	--	--	--	--	--	--	--	--	--	--	--	--	--	--	--	--	--	--	--	--	--	--	--	--	--	--	--	--	--	--	--	--	--	--	--	--	--	--	--	--	--	--	--	--	--	--	--	--	--	--	--	--	--	--	--	--	--	--	--	--	--	--	--	--	--	--	--	--	--	--	--	--	--	--	--	--



2 POWER RISER
NO SCALE

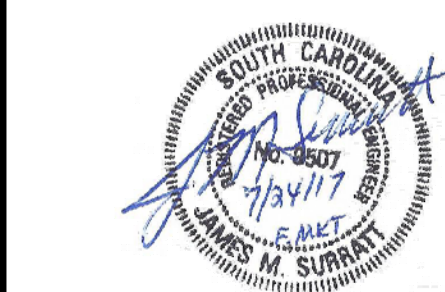


J. M. Surratt, PE

233 Johnston Street
Rock Hill, SC 29730
Phone 1-803-322-7630

NOTE: ALL QUESTIONS AND INQUIRIES ARE TO BE DIRECTED TO MICHAEL CRUMP THE PROJECT COORDINATOR, AT SPECTRUM ENTERPRISES, INC. OFFICE 803-328-1118, CELL 803-417-2790

Professional Seal



THE ENGINEER HAS NOT BEEN RETAINED TO PERFORM CONTRACT ADMINISTRATION SERVICES

General Notes:

- THESE DRAWINGS AND ELECTRICAL INSTALLATIONS WERE PREPARED AND INSTALLED PER THE 2014 NATIONAL ELECTRICAL CODE AND THE AUTHORITY HAVING JURISDICTION (AHJ).
- MARKED EQUIPMENT LOCATIONS ARE FOR BEST REFERENCE AND INFORMATION.
- PENETRATIONS THROUGH WALL AND CEILING ASSEMBLIES SHALL NOT THEIR ALTER FIRE WATER, MOISTURE AND AIR CODE RATINGS.
- ALL MATERIALS SHALL BE NEW AND LISTED WITH A U.S. AGENCY SUCH AS "UL", "MET LABS", "ETL", ETC. MARKS SHOWING "CE" ONLY, WITHOUT AGENCY MARKS, ARE NOT ACCEPTABLE.
- COMMERCIAL APPLICATIONS OF WIRE TYPE "NM" NON-METALLIC SHEATHED CABLE SHALL NOT BE USED.
- PANELBOARDS AND CIRCUITS SHALL BE PERMANENTLY MARKED WITH NAME AND USE.
- UNLESS OTHERWISE MARKED, CONDUCTORS SHALL BE COPPER AND SIZED PER PANELBOARD SCHEDULE.
- PER NEC 110.14, 60° C TABLE IS SHOWN FOR WIRING SIZES 100a AND LESS. FIELD USE OF 75° C WIRE TABLE MAY BE USED IF ALL ATTACHED EQUIPMENT IS MARKED AT LEAST 75° C.
- ELECTRICAL CONTRACTOR SHALL VERIFY OLD/NEW EQUIPMENT COMPATIBILITY, FURNISH, INSTALL, AND GUARANTEE FOR ONE YEAR ALL MATERIALS NECESSARY TO COMPLETE THIS SCOPE OF WORK.
- CONTRACTOR SHALL CONTACT THE DESIGN ENGINEER OF ERRORS OR OMISSIONS. THE ENGINEER SHALL RENDER FINAL DECISIONS.
- CONTRACTOR IS RESPONSIBLE AND SHALL ENFORCE THEIR ELECTRICAL WORKER SAFETY POLICIES ON SITE.
- MANUFACTURER'S FLASH PROTECTION WARNING LABELS SHALL BE MARKED ON SWITCH BOARDS, PANEL BOARDS & MOTOR CONTROL CENTERS PER ARTICLE 110.16 PER THE 2014 NEC.
- IF APPLICABLE, PROVIDE A 20a DISCONNECT SWITCH AT OVERHEAD DOOR MOTORS FOR MAINTENANCE.

REVISIONS

Project Title:
RENOVATION FOR
CHESTER FARMER'S
MARKET
116 COLUMBIA STREET
CHESTER, SC 29706

Sheet Title:
ELECTRICAL

Project No.: 5472

Drawn By: MAC Checked By: MAC

Scale: AS SHOWN Sheet No.: E1

Date: 7-25-2017

